

From Trash to Treasure





Precious

Hey Everyone!

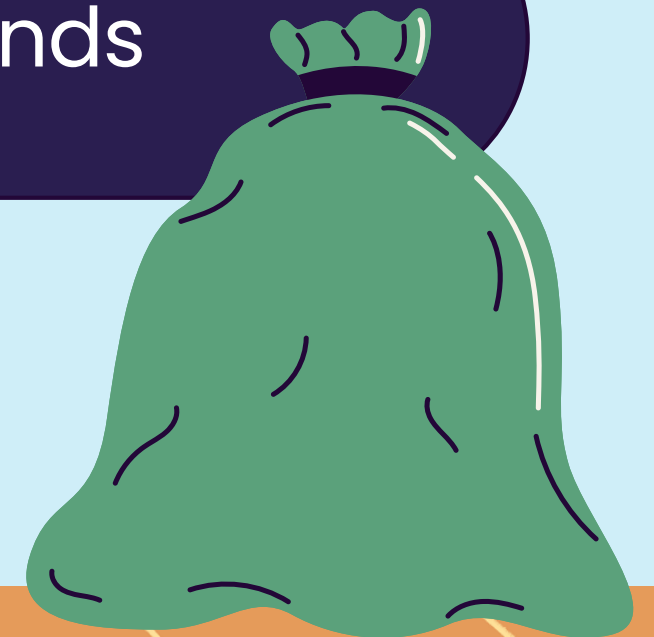
Who can guess how many pounds of trash we produce a day?

A About 2–3 pounds

B About 4–6 pounds

C We produce no trash

D About 10–12 pounds



WHAT TYPES OF TRASH DO
YOU SEE AROUND CAMPUS?

Site by Sight

Did you know that about 140 million tons end up in landfills?





PAPER

**18.35 million tons
(paper and paperboard)**

PLASTIC

26.82 million tons

FOOD

30.63 million tons

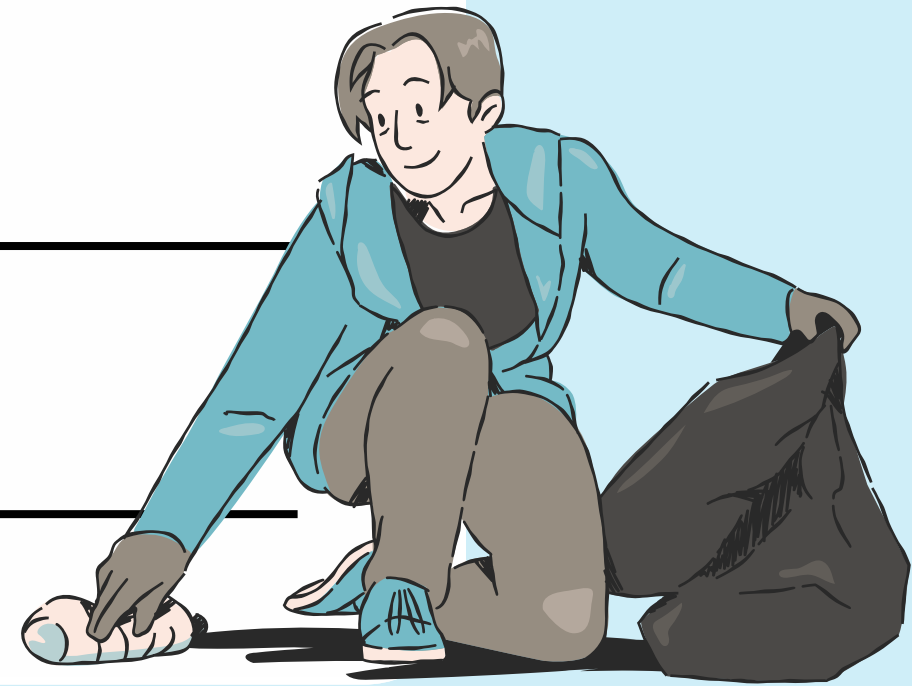
Annually

Can Anyone Name the 3 R's of Sustainability?

R

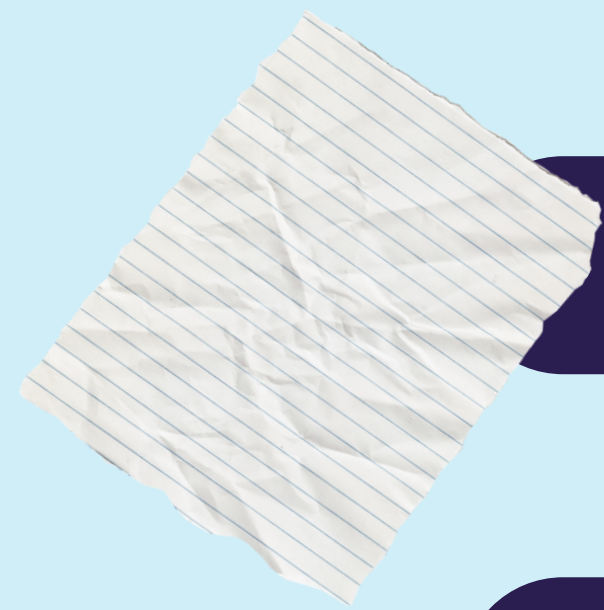
R

R



WHAT ARE SOME THINGS
YOU CAN RECYCLE?

Common recyclables found in schools



Paper

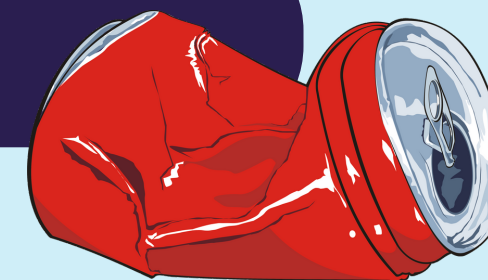
Cardboard



Bottles



Cans



RECYCLING CAN BE THE
NUMBER ONE THING WE CAN
DO FOR THE ENVIRONMENT
IF WE DO IT PROPERLY 

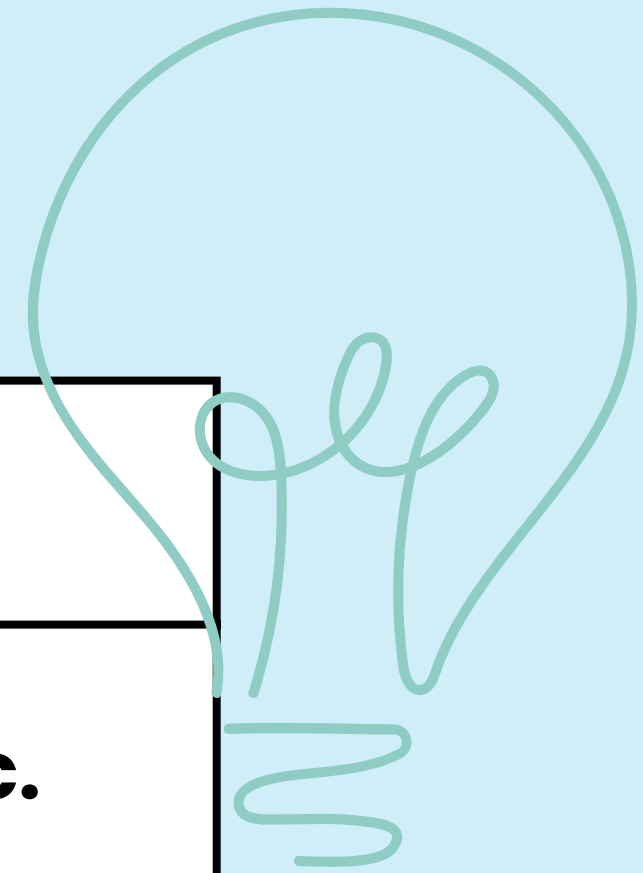
Recycle Correctly

Proper sorting ; Placing items in the correct container/bins

Try to keep your recyclables loose. Use bins instead of plastic.

Flatten paper or cardboard

Try to keep the lids on plastic bottles or glass items when recycling



Prepare your recyclables

Avoid Contamination



Bins

Recycling bins come in a variety of colors, sizes, and materials. You can use color-coded recycling bins to visually signal what should be disposed of in each bin. Different colored bins can signal where paper, plastics, metal, and food waste should be placed.



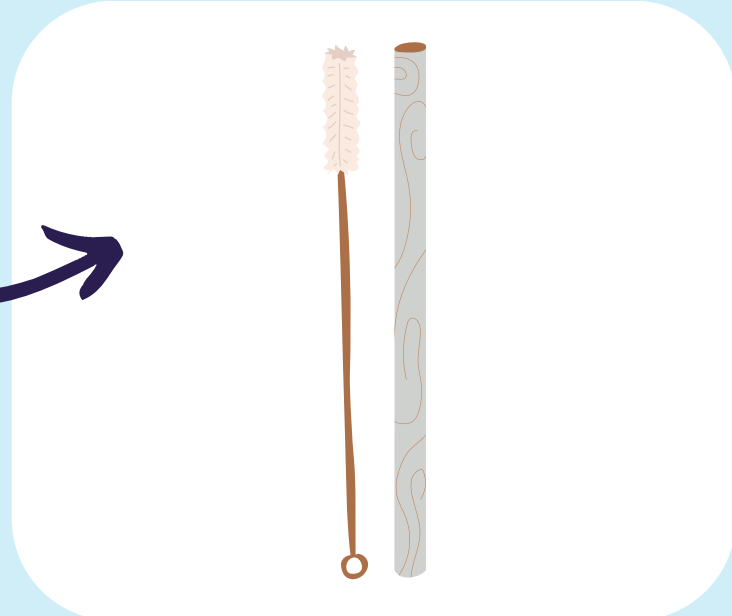
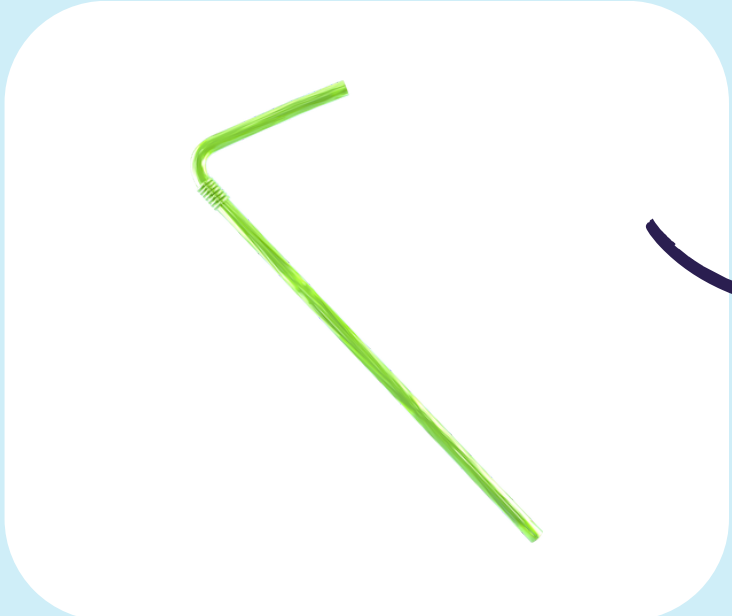
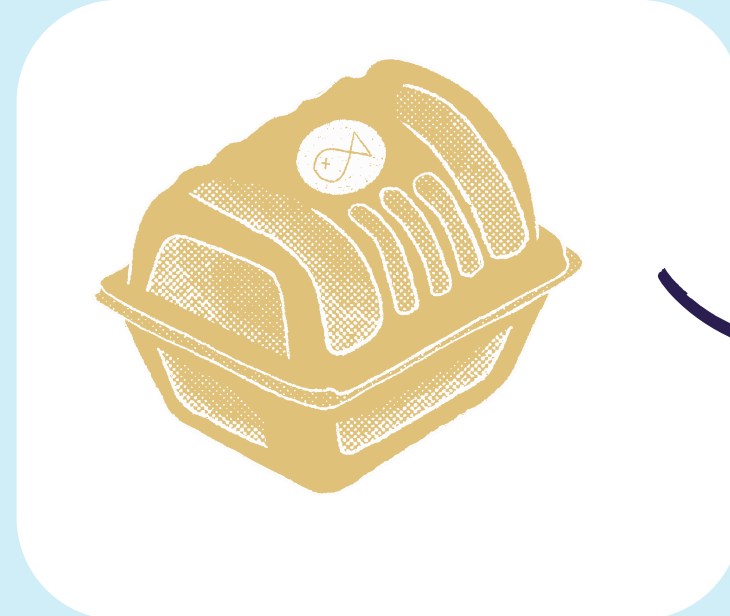
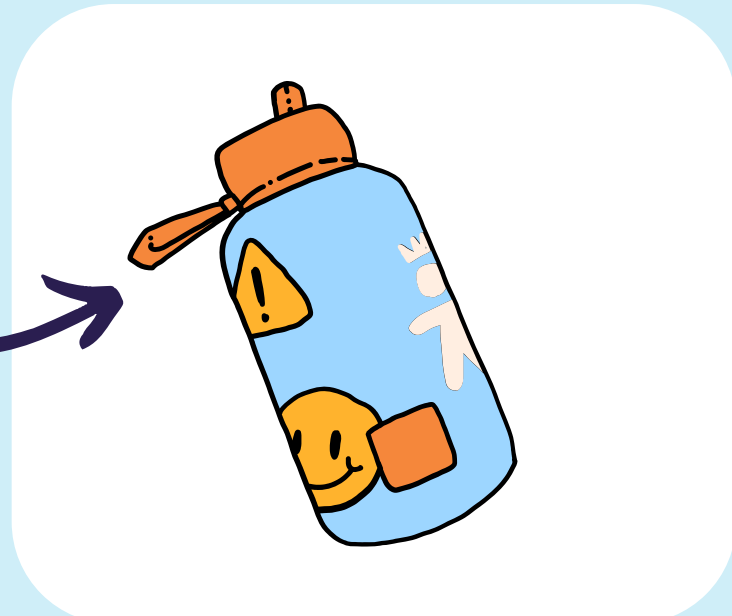
WHAT IS ONE WAY TO
RECYCLE CORRECTLY?

Reuse or Refill

Allows products to be used to their fullest extent.

WHAT ARE SOME THINGS
YOU CAN REUSE / REFILL?

Reuse / Refill Object Alternatives



Reduce



Bring Your Reusable Bottles.

Stop at a refill station. Avoid plastic bottles.

Bring Your Own To-Go Containers.

Avoid food waste and packaging waste.

Take Stock

Before starting the new school year, look through last year's materials. Many items can be reused or recycled.

Green School Supplies

- Use school supplies wrapped in minimal packaging, and buy in bulk when possible.

Upcycle



Refuse



Plastic and Plastic-Lined
Cups, Plates, Containers



Plastic Bags, Plastic Wrap,
Snack Bags, Candy Wrappers



Beverage and Food Cartons,
Pouches, Freezer Boxes

Rethink

First, use up what you have and dispose of it correctly!

Reduce: Is this item still useful?

Reuse: Might someone else need/want this item?

Recycle: What is one habit I can change/adjust?

Start small! You can have more impact than you can imagine.

How Contribute on Campus?

- Reuse schools supplies (pens, pencils, etc)
- Do not throw away old (text)books
- Place items in appropriate bins
- Take stock in the classroom
- Try to recycle things that are recyclable instead of disposing of them

Start Today



Thank You

Exit Survey

